



REGIONAL SPECIALISED METEOROLOGICAL CENTRE-TROPICAL CYCLONES, NEW DELHI TROPICAL WEATHER OUTLOOK

DEMS-RSMC TROPICAL CYCLONES NEW DELHI DATED 12.04.2025

TROPICAL WEATHER OUTLOOK FOR THE NORTH INDIAN OCEAN (THE BAY OF BENGAL AND THE ARABIAN SEA) VALID FOR THE NEXT 168 HOURS ISSUED AT 0600 UTC OF 12.04.2025 BASED ON 0300 UTC OF 12.04.2025.

BAY OF BENGAL:

Yesterday's cyclonic circulation over westcentral Bay of Bengal extending upto 1.5 km above mean sea level became less marked at 0300 UTC of Today's, 12th April, 2025.

Scattered to broken low medium clouds with embedded intense convection lay over Andaman Sea, Gulf of Martaban, Tenasserim Coast (minimum Cloud Top Temperature - 60°C to -70°C). Scattered low and medium clouds with embedded isolate weak to intense convection lay over south & eastcentral Bay of Bengal.

*PROBABILITY OF CYCLOGENESIS (FORMATION OF DEPRESSION) DURING NEXT 168 HRS:

24 HOURS	24-48 HOURS	48-72 HOURS	72-96 HOURS	96-120 HOURS	120-144 HOURS	144-168 HOURS
NIL	NIL	NIL	NIL	NIL	NIL	NIL

*NOTE: EVERY 24HR FORECAST IS VALID UPTO 0300 UTC (0830 IST) OF NEXT DAY

ARABIAN SEA:

Scattered low and medium clouds with embedded isolate moderate to intense convection lay over Comorin area adjoining southeast Arabian Sea.

*PROBABILITY OF CYCLOGENESIS (FORMATION OF DEPRESSION) DURING NEXT 168 HRS:

24 HOURS	24-48 HOURS	48-72 HOURS	72-96 HOURS	96-120 HOURS	120-144 HOURS	144-168 HOURS
NIL	NIL	NIL	NIL	NIL	NIL	NIL

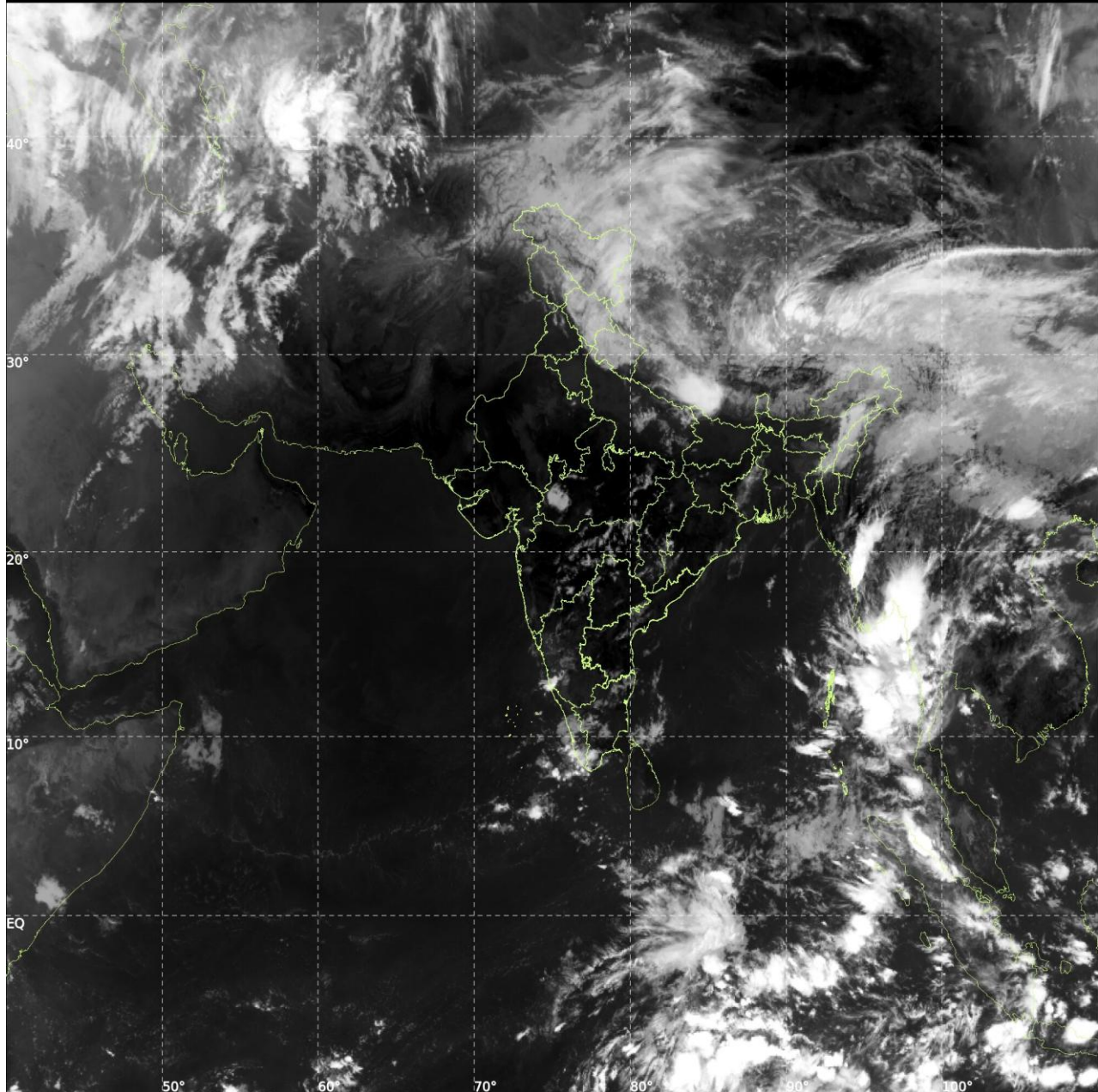
*NOTE: EVERY 24HR FORECAST IS VALID UPTO 0300 UTC (0830 IST) OF NEXT DAY



INSAT-3DS IMG, Thermal Infrared1 Count @ 10.83 μm
GMT:12-04-2025/(0300-0327) IST:12-04-2025/(0830-0857)
L1C MERCATOR (LINEAR STRETCH: 1%)

459

892



Cloud distribution: (a) Isolated: <25%, Scattered:25-50%, Broken: 51-75%, Solid:>75%, Convection Intensity: (a) Weak: Cloud Top Temperature(CTT)>-25°C,(b)Moderate:CTT:-25°Cto-40°C,(c)Intense:CTT: -41°Cto -70°Cand(d)Very Intense::Less than -70°C
PROBABILITYOFCYCLOGENESIS(FORMATIONOFDEPRESSION):NIL:0%,LOW:1-33%,MODERATE:34-66%ANDHIGH:67-100%
ThisisaguidanceBulletinforWMO/ESCAPPanelMembercountries.VisitrespectiveNationalwebsitesforCountryspecificBulletins